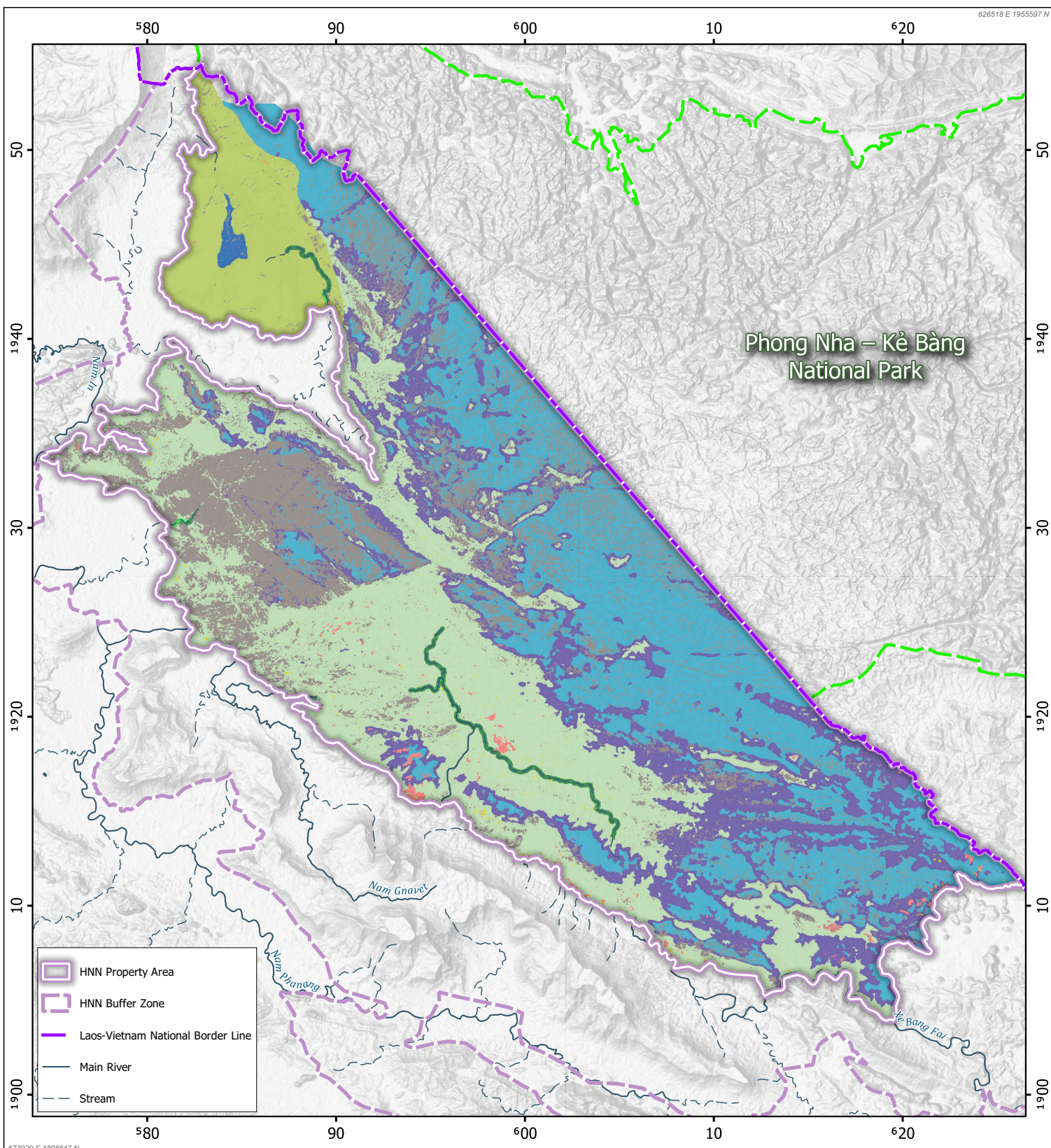


Scale 1:280,000

Created Date: 2021-08-13

HIN NAM NO NATIONAL PARK

Vegetation map



LEGEND

Vegetation

- | | | | |
|---|--|--|--|
| 1: Lowland semideciduous broad-leaved forests on flatland with alluvial soils at elevations of 200-400 m a.s.l. | 3: Lowland and submontane semideciduous and evergreen broad-leaved forests on sandstone at elevations of 400-1200 m a.s.l. | 5: Lowland semideciduous and evergreen broad-leaved limestone forests at elevations of 250-500 m a.s.l. | 7: Broad-leaved forests and woodland on slopes and tops limestone mountains at elevations of 600-1000 m a.s.l. |
| 2: Gallery evergreen broad-leaved forests on alluvial soils at elevations of 180-220 m a.s.l. | 4: Montane evergreen broad-leaved mixed and coniferous forests on sandstone at elevations of 1200-1492 m a.s.l. | 6: Dwarf wind-formed semideciduous broad-leaved limestone scrub on tops of limestone hills at elevations of 400-600 m a.s.l. | 8: Bare rock |
| | | | 9: Old fallow |
| | | | 10: New fallow |

Map CRS: EPSG:32648
CRS Name: WGS 84 / UTM zone 48N
Coordinate Units: Meters
Map Scale: 1:280,000
Page Size: 210 x 297 mm
Made with: QGIS 3.18 on Windows



0 3 6 9 12 15
kilometers

Data Source:
Administrative delimitation data is courtesy of the Department of Heritage, MICT.
Background relief data is courtesy of SRTM data from the JPL of NASA.
River vector data is courtesy of the IWMI.

Vegetation classification generated through non-supervised & supervised processes using 12 bands sentinel 2 imageries taken on 24/02/2021.